

Prestige

Windows and Doors



ESWINDOWS

ESWINDOWS

**Prestige products meet today's
top architectural trends:**

Narrow sightlines

Superior energy efficiency

Hurricane resistance

Custom colors

Insulating glass and thermally broken aluminum

Corrosion-resistant hardware for coastal applications



The Prestige collection was developed in collaboration with leading architects and designers who specialize in modern construction. The result: clean lines and large glass panels.

More than 30 years of experience as a window and door manufacturer have allowed us to develop this premier line of products that meet the highest performance standards. These products are crafted with one purpose: to bring the topmost quality and design to every project.

Prestige Features

- Consolidated under a single source warranty
- Available in two-tone finish
- High performance insulation from efficient spacers
- Superior energy performance with low U-values
- Reduced sound transmission
- Exclusive hardware
- Extended warranty
- Color or ultra-clear interlayers
- Coastal hardware standard


Windows

- ES-P252 Casement/Awning/Fixed Window**
- ES-FX3050 Frameless Window Wall**
- ES-8000T Storefront Window**

Doors

- ES-46T Swing Door**
- ES-PSD5030 Pivot/Entry Door**
- ES-SGD 2020 Sliding Glass Door**
- ES-BF5010T Bifold Door**

Prestige
LINE



Design. Quality. Luxury.

The Prestige residential line is designed for sophistication and style. Each piece is carefully manufactured and checked for quality, ensuring full functionality and the ultimate end-user experience. These luxury windows and doors are built to the highest specifications to meet our exceptional standards.

Prestige
LINE

WINDOWS

ES-P252

Casement/Awning/Fixed Window

ES-P252 is an operable out-swing window that offers an unobstructed view and excellent ventilation. This product is ideal for areas that demand high light transmittance and minimal thermal transfer.

System Description

Casement

- Small and large missile impact rated
- Maximum size: 48" width x 84" height
- Frame depth: 2 1/2"
- Tested water infiltration: 17.1 psf.
- Tested design load: +95/-105 psf. (SMI)
+95/-105 psf. (LMI)

Awning

- Small and large missile impact rated
- Maximum size: 42" width x 37" height
- Frame depth: 2 1/2"
- Tested design load: +/-70
- Tested air infiltration: 6.24 psf.
- Tested water infiltration: 10.5 psf.

Fixed

- Small and large missile impact rated
- Maximum size: 60" width x 144" height
- Frame depth: 2 1/2"
- Tested water infiltration: 17.1 psf.
- Tested design load: +95/-105 psf. (SMI)
+95/-105 psf. (LMI)
- U-value: 0.37 on clear insulating laminated SB 70
- SHGC: 0.23 on clear insulating laminated SB 70

Features

- Single arm operator and multi-point lock
- Head receptor, sub-sill and strap anchors available
- Thermally broken frame
- Flange or equal leg frame



ES-FX3050

Frameless Window Wall

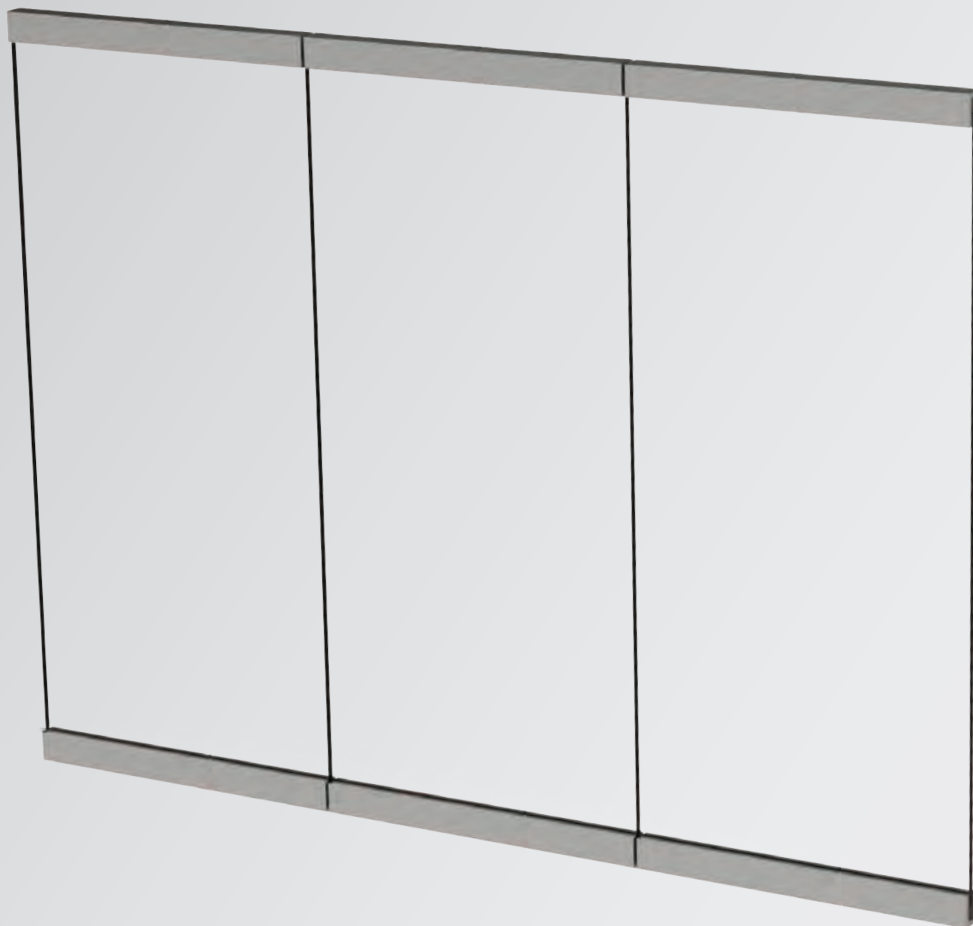
The ES-FX3050 frameless window is a glass wall that has no vertical aluminum profiles. The result is more glass and an unobstructed view.

System Description

- Large missile impact rated
- Maximum size: 97 1/2" width x 192" height
- Frame depth: 3 3/8"
- Shoe height: 4 3/4"
- 1 1/8" laminated glass
- Tested water infiltration: 15 psf.
- Tested design load: +/- 55 psf.

Features

- Top and bottom rail options
- Multiple module option available
- Corner option available



ES-8000T

Storefront Window

The ES-8000T / 8000T Jumbo is an impact resistant, thermal storefront system.

This product uses pour and debridge thermal break for superior thermal performances. Standard 8000T is compatible with our ES-9000 impact door.

System Description

- Large missile impact rated
- Maximum panel size:
 - 60" width x 144" height (ES-8000T)
 - 84" width x 180" height (ES-8000T Jumbo)
- Tested design load: +90/-120 psf (ES-8000T)
+/-70psf (ES-8000T Jumbo)
- Tested water infiltration: 12 psf.
- U-value: 0.43 on clear insulating laminated SB70
- SHGC: 0.24 on clear insulating laminated SB 70
- Tested air infiltration: 6.24 psf.

Features

- Screw cover
- Integral door adaptor
- Pre-assembled and pre-glazed
- Surface applied ogee or flat muntins
- Thermally broken frame



Prestige
LINE

DOORS

ES-46T Swing Door

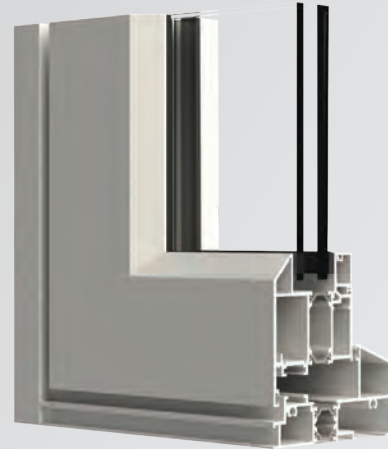
ES-46T is an out-swing door designed for balconies and open spaces. It pairs easy operation with a sophisticated modern look.

System Description

- Small and large missile impact rated
- Maximum size for single door:
 - 41 3/16" width x 108" height
 - 38 3/16" width x 120" height
 - With transom: 41 3/16" width x 134" height
- Maximum size for double door:
 - 80" width x 98" height
 - 74" width x 120" height
 - With transom: 80" width x 134" height
 - With sidelites: 98" width x 160" height
- Frame depth: 4 1/2"
- Standard threshold height: 2 1/4"
- ADA threshold height: 1/2"
- Tested water infiltration: 15 psf.
- Tested design load: +100/-120 psf.
- U-value: 0.44 on clear insulating laminated SB 70
- SHGC: 0.21 on clear insulating laminated SB 70

Features

- ADA threshold and high bottom rail optional
- Multi-point hardware
- Thermally broken frame



ES-PSD5030

Pivot/Entry Door

Designed for captured glass, ssg glass, and multiple phenolic panel finish options.

System Description

- Pivot and swing door system
- Frame depth: 5"
- Maximum sizes:
 - 60" width x 144" height
 - 72" width x 120" height
 - 90" width x 96" height
- Impact door
- ADA threshold
- Designed for multiple options of glass and phenolic panel

Features

- Thermally broken system for improved performance and insulation
- Anodized, painted or wood grain finishes available
- Automatic drop-down seal to close any gap between the door and the floor/frame sill
- Modular multi-point lock with electric capability
- Self-closing pivot hinge
- Damper control (soft close and wall protection)
- Hold positions at 0°, 90° and -90°
- Modular multi-point lock with electric capability (optional)
- Multifunction die-cast aluminum corner joints



DOORS

ES-SGD2020 Sliding Glass Door

The ES-SGD2020 is an impact-rated sliding glass door with minimal sightlines. This narrow door features less aluminum and more glass than others allowing a clearer view.

System Description

- Large missile impact rated
- Maximum panel size:
 - 72" width x 120" height
 - 60" width x 144" height
- Frame depth: 4 3/8" (2 track), 6 7/16" (3 track), 8 1/2" (4 track), 10 9/16" (5 track)
- Sill height: 1 7/8"
- 90 degree and 135 degree corners
- 2" interlocks
- Tested water infiltration: 12 psf.
- Tested design load:
 - Min. DP: +/-65 psf.
 - Max. DP: +90/-102 psf.
- U-value: 0.57 on clear insulating laminated SB 70
- SHGC: 0.23 on clear insulating laminated SB 70

Features

- Multiple panel configurations
- Removable sill riser painted to match the door
- Needle bearing acetal roller
- Standard contemporary handle & thumb turn
- 2 point locking hardware
- Multiple track options
- Pocket configuration



ES-BF5010T

Bifold Door

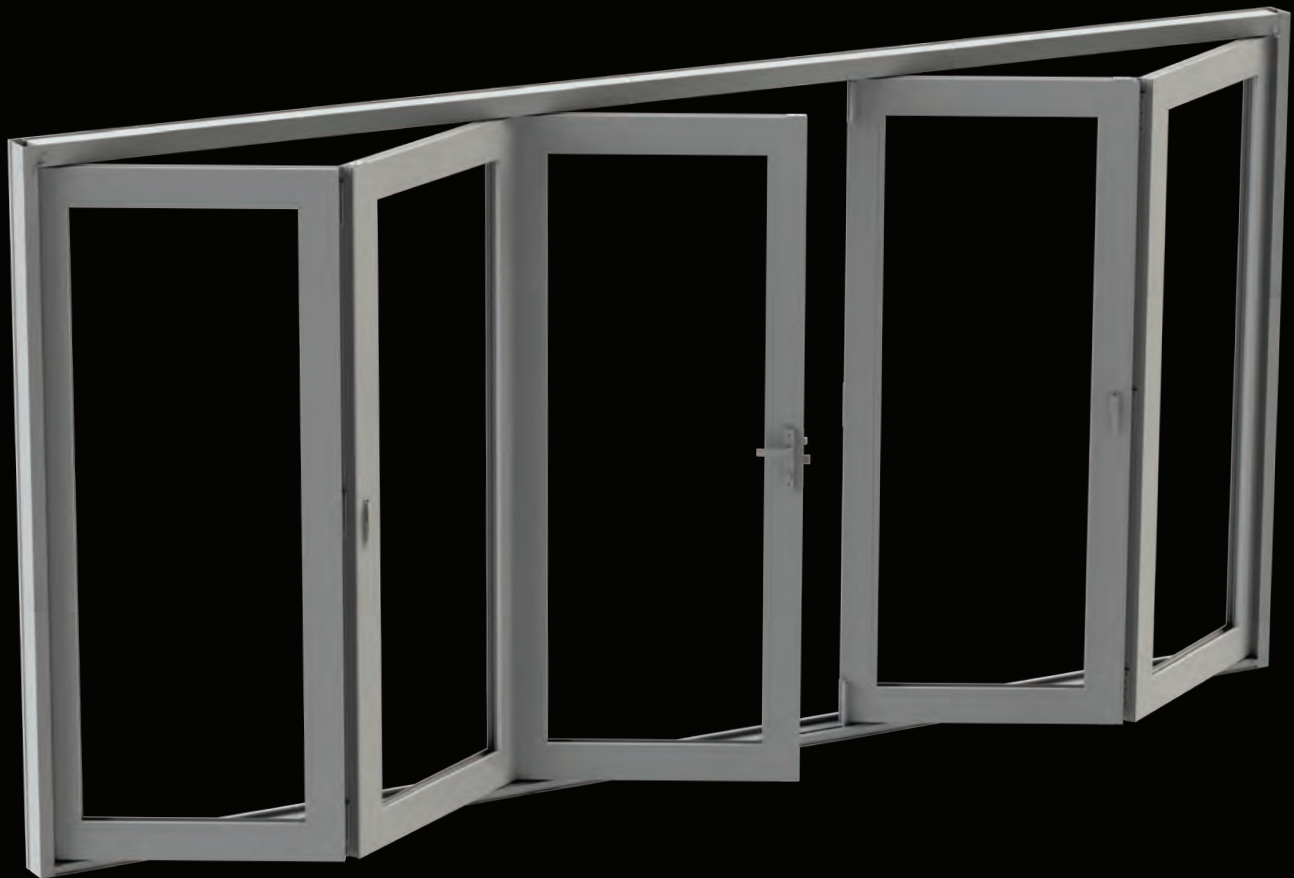
The ES-BF5010T bifold door allows you to join two spaces effortlessly. The system provides a completely clear opening with a maximum of 120" in height.

System Description

- Multiple panel size: 42" width x 120" height
- Maximum 16 panels center meet
- Frame depth: 5"
- Threshold height: 2 1/2"
- Designed for insulating laminated glass and laminated glass
- 2" threshold for maximum water infiltration protection
- Tested water infiltration: 15 psf.
- Tested design load: +95/-95 psf.
- U-value: 0.77 on clear insulating laminated SB 70
- SHGC: 0.17 on clear insulating laminated SB 70

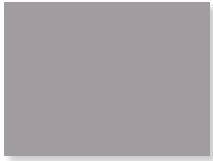
Features

- Thermally broken frames
- ADA sill option

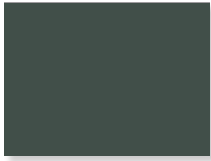


COLORS AND FINISHES

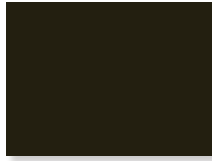
Color Options



Silver



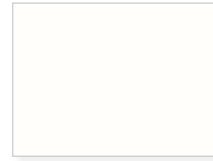
Dark Gray



Bronze



Black



White

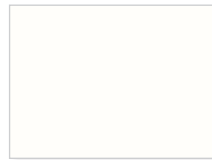
Hardware Finishes



Bronze



Silver



White



Black

- Personalized colors and hardware finishes available
- Class 1 clear anodized finish is available upon request

ACCESORIES

Design elements

The Prestige line pairs fine architectural details with uncompromising performance.

Every Prestige window and door is produced with the finest materials, using the latest technologies and benefiting from the skilled talent of our experienced team. The result is an aesthetic design with engineered precision and proven performance.



ES-P252



ES-46T



ES-SGD2020



ES-BF5010T



The perfect combination to expand
and connect spaces.

Prestige
LINE

EXPERTISE

Engineering and Design

We specialize in providing solutions for the most complex projects and responding efficiently to the requests of architects and developers. The combination of advanced software technology and a team of engineers and designers who specialize in aluminum, glass, window systems and façades, allow us to ensure delivery of high quality products that exceed our customers' expectations.

The Prestige line provides the perfect combination of luxury, design and performance across a wide range of product types. Whether you are looking for noise reduction, temperature control, or protection from extreme weather, our line of products can provide the perfect solution, without sacrificing aesthetics.

Service

Our engineers and designers provide ongoing assistance and technical support to ensure the best solution for each type of project. We offer each customer complete and personalized guidance, pointing out the main factors to consider in order to plan and carry out their construction with maximum benefits.



Prestige
LINE

Design. Quality. Luxury.

ESWINDOWS
The Power of Quality

Prestige
LINE