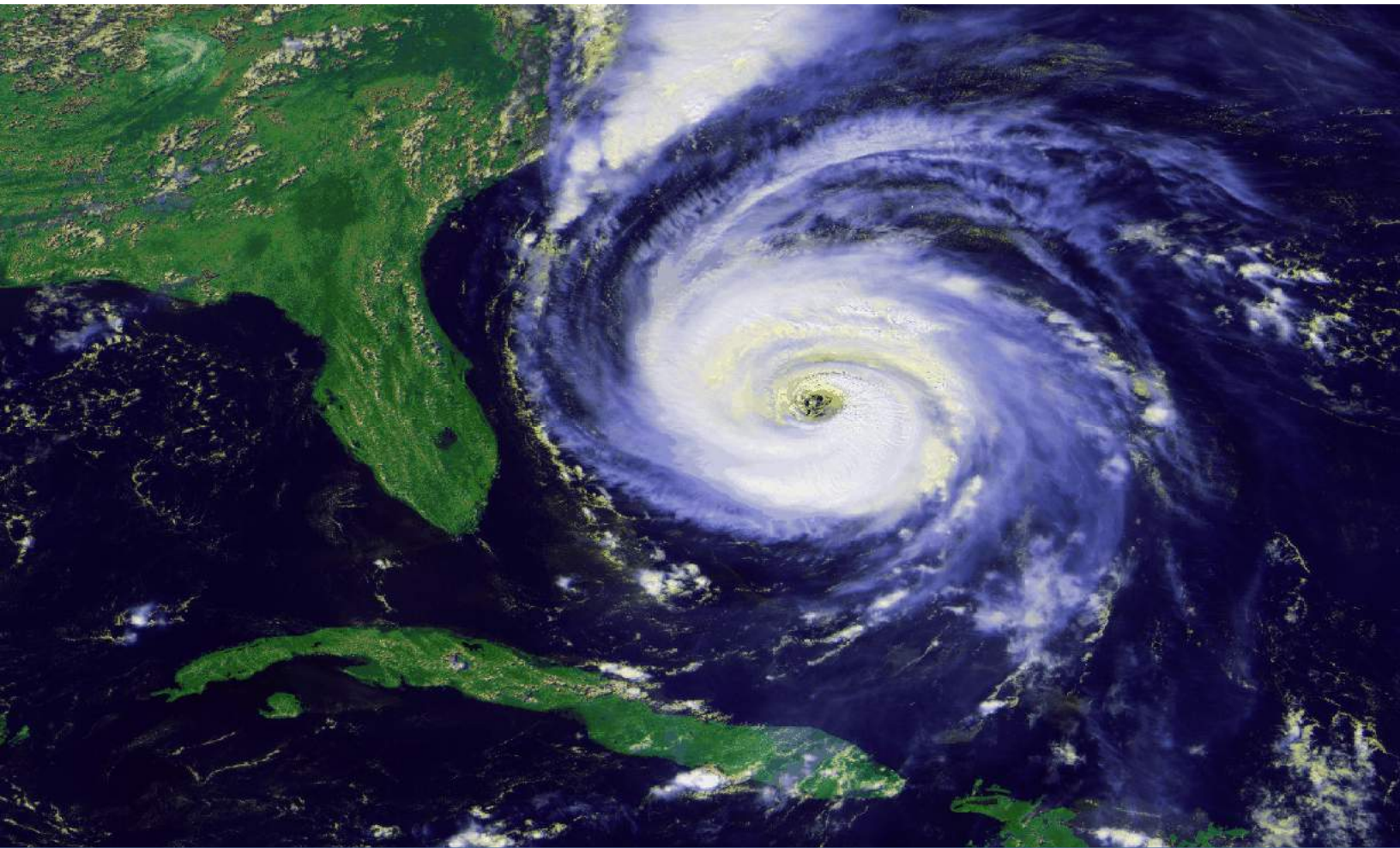




WINDOW & DOOR
REPLACEMENT COMPANY

we see it through



Hurricane Preparedness Manual - 2017



WINDOW & DOOR

REPLACEMENT COMPANY

we see it through

Window & Door Replacement Company understands how devastating hurricanes can be. As part of our service to our community, we have prepared a hurricane preparedness manual to provide comprehensive guidance, information, resources and support to help residents prepare and recover in the event of a hurricane. Please use the Hurricane Preparedness Manual as a resource to help keep your family and property safe before, during and after a storm.

Hurricane season in the Atlantic basin runs from June 1 through November 30 presenting the possibility of damaging storm surge, flooding and wind. During hurricane season, it is imperative that you are well prepared before a storm arrives in order to effectively protect your family and property investments. With reports of storms forming already forming in the Atlantic, like Tropical Storm Arlene, it's a great time to start preparing for the 2017 hurricane season. In addition to Arlene, the names of the other storms potentially due to arrive in 2017 are:



Saffir-Simpson Hurricane Wind Scale


Category 1 - 5

1

WIND: 74-95 mph

DAMAGE: Very dangerous winds will produce some damage

2

WIND: 96-110 mph

DAMAGE: Extremely dangerous winds will cause extensive damage

3

WIND: 111-129 mph

DAMAGE: Devastating damage will occur

4

WIND: 130-156 mph

DAMAGE: Catastrophic damage will occur

5

WIND: 157 mph or higher

DAMAGE: Catastrophic damage will occur



* The Saffir/Simpson Hurricane Scale (shown above) can be used to estimate the potential property damage and flooding expected along the coast during a hurricane.

Category 1 - Winds **74-95** mph or storm surge **4-5** feet above normal.* No real damage to building structures. Damage primarily to unanchored mobile homes, shrubbery and trees. Also, some coastal road flooding and minor pier damage.

Category 2 - Winds **96-110** mph or storm surge **6-8** feet above normal.* Some roofing material, door and window damage to buildings. Considerable damage to vegetation, mobile homes and piers. Coastal and low-lying escape routes flood **2-4** hours before arrival of center. Small craft unprotected anchorages break moorings.

Category 3 - Winds **111-129** mph or storm surge **9-12** feet above normal.* Some structural damage to small residences and utility buildings with a minor amount of curtainwall failures. Mobile homes are destroyed by floating debris. Terrain continuously lower than **5** feet above sea level may be flooded inland as far as **6** miles.

Saffir-Simpson Hurricane Wind Scale



Category 1 - 5



WIND: 74-95 mph

DAMAGE: Very dangerous winds will produce some damage



WIND: 96-110 mph

DAMAGE: Extremely dangerous winds will cause extensive damage



WIND: 111-129 mph

DAMAGE: Devastating damage will occur



WIND: 130-156 mph

DAMAGE: Catastrophic damage will occur



WIND: 157 mph or higher

DAMAGE: Catastrophic damage will occur



Category 4 - Winds **130-156** mph or storm surge **13-18** feet above normal.* More extensive curtainwall failures with some complete roof structure failure on small residences. Major erosion of beach areas. Major damage to lower floors of structures near the shore. Terrain continuously lower than **10** feet above sea level may be flooded requiring massive evacuation of residential areas inland as far as **6** miles.

Category 5 - Winds greater than **157** mph or storm surge greater than **18** feet above normal.* Complete roof failure on many residences and industrial buildings. Some complete building failure with small utility buildings blown over or away. Major damage to lower floors of all structures located less than **15** feet above sea level and within **500** yards of the shoreline. Massive evacuation of residential areas on low ground with **5-10** miles of the shoreline may be required.

**Actual storm surge values will vary considerably depending on coastal configurations and other factors.*

The Family Disaster Plan



Disasters can affect any part of the world at any time of the year, swiftly and without warning. Most people don't think of a disaster until it is too late then suddenly realize how unprepared they are for the massive changes disasters effect. During a disaster, local officials are often overwhelmed and emergency response personnel may not be able to reach everyone who needs help immediately. Therefore, it is important to prepare ahead of time to reduce the fear, confusion and loss that disasters affect.

The plan described in this manual will help individuals or families prepare for any type of disaster:

Create a Family Disaster Supplies Kit

One of the first steps towards preparedness is to create a family disaster supplies kit. This kit should contain all the essential items needed during the period immediately following a disaster, such as water, food, tools, medical supplies, clothing and bedding, and other special items like important documents. It often becomes necessary after a disaster to seek refuge in a public shelter. These shelters may not have some of the basic necessities. A disaster supplies kit can make a stay in a public shelter more comfortable.

Create a Family Disaster Plan



Establish meeting places inside and outside the home, as well as in your neighborhood. Make sure everyone knows when and how to contact each other if separated.

- Meeting location in the home
- Meeting location outside of the home
- Meeting location in the neighborhood

Decide on the best escape routes from the home. Identify two ways out of each room. Plan how to take care of pets.

- Determine where pets will be
- Pet supplies needed

Select a friend or relative to be an out-of-town family contact. Call this person before and after the disaster to let them know the status of your situation. Make sure everyone knows the contact's phone number.

- Learn what to do if asked to evacuate
- Determine locations of area shelters

cont.



Make a checklist and periodically update it.

- Post emergency telephone numbers by phones (fire, police, etc.).
- Teach children how and when to call 911 or the local EMS number for help.
- Teach each family member how to use a fire extinguisher and keep it in a central location. Check it each year.
- Install smoke detector on each level of the home, especially near bedrooms.
- Conduct a home hazard hunt.
- Stock emergency supplies and assemble a disaster supply kit.
- Learn basic first aid. At the very least, each family member should know CPR, how to help someone who is choking and first aid for severe bleeding and shock. The Red Cross offers basic training of this nature.
- Identify safe places in the home to go for each type of potential disaster.
- Check to make sure there is adequate insurance coverage.

Your Family Disaster Supplies Kit



After a disaster, local officials and relief workers will be on the scene but they cannot reach everyone immediately. You could get help in hours or it may take days. Would your family be prepared to cope with the emergency until help arrives?

Your family will cope best by preparing for disaster before it strikes. One way to prepare is by assembling a Disaster Supplies Kit. Once disaster hits, you won't have time to shop or search for supplies. If you've gathered supplies in advance, your family can endure an evacuation or home confinement.

To Prepare Your Kit

- Review the checklists in this document.
- Gather the supplies that are listed; you may need them if your family is confined at home.
- Place the supplies you'd most likely need for an evacuation in an easy-to-carry container.
- Store your kit in a convenient place known to all family members.
- Rotate stored food and water every six months to maintain freshness.
- Keep items in airtight, plastic bags.
- Ask your physician or pharmacist about storing prescription medication.
- Revisit/refresh your kit at least once a year; replacing batteries, clothes, etc.

cont.



Water

Store water in plastic containers such as soft drink bottles. Avoid using containers that will decompose or break such as milk cartons or glass bottles. A normally active person needs to drink at least two quarts of water each day. Hot environments and intense physical activity can double that amount. Children, nursing mothers, ill and elderly people will need more.

- Store one gallon of water per person per day (two quarts for drinking, two quarts for food preparation/sanitation).
- Keep at least a five-seven day supply of water for each person in your household.

Food

Store at least a five-day supply of nonperishable food. Select foods that require no refrigeration, preparation or cooking, and little or no water. Select food items that are compact and lightweight.

- Ready-to-eat canned meats, fruits and vegetables
- Canned juices, milk, soup (if powdered, store extra water)
- Staples—sugar, salt, pepper
- High energy foods—peanut butter, jelly, crackers, granola bars, trail mix
- Vitamins
- Foods for infants, elderly people or people on special diets
- Comfort/stress foods—cookies, hard candy, sweetened cereals, lollipops, instant coffee, tea bags

cont.



First Aid Kit

Assemble a first aid kit for your home and one for each car. A first aid kit should include:

- Assorted sizes of sterile adhesive bandages
- 2-inch sterile gauze pads (4-6)
- 4-inch sterile gauze (4-6)
- Hypoallergenic adhesive tape
- Triangular bandages (3)
- 2-inch sterile roller bandages (3 rolls)
- 3-inch sterile roller bandages (3 rolls)
- Scissors
- Tweezers
- Needles
- Antiseptic
- Thermometer
- Tongue depressors (2)
- Tube of petroleum jelly or other lubricant
- Cleansing agent/soap
- Sunscreen
- Latex gloves

Non-prescription Drugs

- Aspirin or non-aspirin pain reliever
- Anti-diarrhea medication
- Antacid (for stomach upset)
- Syrup or Ipecac (use to induce vomiting if advised by the Poison Control Center)
- Laxative
- Activated charcoal (use if advised by the Poison Control Center)

cont.



Tools and Supplies

- Mess kits or paper cups, plates and plastic utensils
- Emergency Preparedness manual
- Battery-operated radio
- Flashlight
- Cash or traveler's checks
- Non-electric can opener, utility knife
- Fire extinguisher: small canister
- Pliers, wrench and screwdriver
- Plastic storage containers
- Matches in a waterproof container
- Signal flare
- Paper and pencils
- Medicine dropper
- Tape
- Whistle
- Plastic sheeting / tarp
- Map of the area
- Bleach

Clothing and Bedding

- Sturdy shoes or work boots
- Hat and gloves
- Foul weather gear
- Thermal underwear
- Blankets and sleeping bags
- Sunglasses

Special Items

- Prescription medication
- Denture needs
- Contact lenses and supplies
- Extra eyeglasses
- Infant formula and bottles
- Powdered milk
- Diapers
- Toys and games

Important Family Documents

Keep these in a waterproof container:

- Will, insurance policies, contracts, deed, stocks and bonds
- Passports, Social Security cards, immunizations records
- Bank account and credit card information
- Family records (birth, marriage and death certificates)

Important Phone Numbers



- * **EMERGENCY** **911**
- * **PUBLIC SAFETY** **561-712-6400**
- * **TDD (HEARING IMPAIRED)** **561-712-6343**
- * **SENIOR HELPLINE**..... **211**

Animal Care & Control.....	561-233-1200
American Red Cross	561-833-7711
Code Enforcement.....	561-233-5500
Consumer Affairs	561-712-6600
Consumer Assistance Hotline.....	800-227-8676
Contractor Certification.....	561-233-5525
Engineering & Public Works	561-684-4000
FEMA.....	800-621-3362
Fire Rescue – Non-Emergency	561-712-6550
Insurance Commissioner.....	561-681-6392
FPL Power Outages	561-697-8000
Health Department	561-840-4500
Palm Tran	561-841-4200
Palm Tran Connection	561-649-9838
Parks and Recreation	561-966-6600
Price Gouging Hotline.....	866-966-7226
Public Affairs Department	561-355-2754
Roads, Drainage, Traffic	561-684-4018
Salvation Army.....	561-686-3530
Sheriff (PBSO) – Non-Emergency	561-688-3000
Solid Waste Authority	561-640-4000
Traffic Signal Repair	561-683-6885
United Way	561-375-6600
*PBC Water Utilities	561-493-6000
Emergency Repairs 24 hrs.....	561-740-4600

opt. 1

**Check your water bill to determine who provides your water.*

Hurricane Preparation Checklist



When a hurricane is forecast for your region, immediately begin or complete storm preparations:

- At least one gallon of drinking water per person, per day (minimum 5 – 7 day supply).
- Water purifying tablets and bleach.
- Hand operated can opener.
- Paper plates and plastic utensils.
- Garbage bags.
- Waterproof first aid kit that includes prescription medicines
- Batteries and flashlight(s)*.
- Non-perishable packaged or canned foods that don't require cooking (minimum 5 – 7 day supply).
- Store personal ID, insurance and title documents in waterproof container.
- Foul weather gear.
- Baby wipes and hand sanitizer.
- Solar-powered cellphone charger.
- Battery-powered radio, TV, lantern(s) and fan(s).

* With limited emergency services and extended arrival times during or after a storm, **candles should be avoided.**

Before or As Hurricane Season Begins



Before, or as early in the hurricane season as possible, create a personal hurricane preparation plan and share it with each family member. Use our Hurricane Preparation Checklist provided to determine if these items need to be purchased and assign responsibility for obtaining them.

Compile Important Addresses and Phone Numbers

- Family members
- Your utility company
- Insurance company
- National Hurricane Center
- Shelters (including pet-friendly ones)
- Federal Emergency Management Agency (FEMA)
- Generator-powered gas stations
- Your community association
- Generator-powered grocery stores

Select your home's safe room: an interior area without windows.

Determine if you live in a Mandatory Evacuation Zone; if so, identify the nearest shelter and its evacuation route.

Trim trees and shrubs December-April. Once a storm watch or warning has been issued, do not trim vegetation of any kind at the risk of creating dangerous debris and being cited.

Purchase and/or test existing generators.

Review insurance policies to ensure you have active personal 1-106 policies and special assessment coverage.

Your Official Information Sources



Review these pages for important preparedness information:

- [Surge Area Mapping Systems \(SAMS\)](#)
- [FEMA hurricane fact sheet](#)
- [Damage prevention checklist for homeowners](#)
- [Hurricane tracking chart](#)

When a hurricane threatens our area, the Hurricane Preparedness banner on the pbcgov.com homepage becomes a Hurricane Activation banner. Clicking the Hurricane Activation banner will lead you to the Hurricane Activation Web site. Information you can get before a storm includes:

- Closings
- Evacuations
- News Briefings
- PBI Airport Information
- Shelters
- Situation Reports
- Latest Media Briefs Video

Keep listening to NOAA Weather Radio or local radio or TV stations for instructions. Watch PBC-TV Channel 20 for news briefings and information.

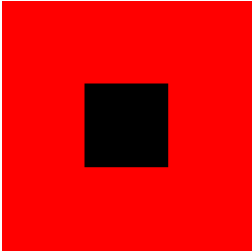
Keep checking the pbcgov.com Website for information on:

- Boil Water Notices
- Closings/ Openings
- Curfews
- FPL Info - power restoration
- Garbage Pickup
- Public Transportation
- Shelters
- Waste/ Sewer Systems

When a Hurricane is Imminent



The National Weather Service issues alerts for the following conditions within a local area:

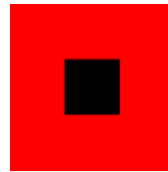


Hurricane Watch
Winds: 55 – 73 mph

An announcement that hurricane conditions are **possible** in your area.

Watches are issued 48 hours in advance of anticipated onset of tropical storm-force winds.

Take Action: Begin or continue storm preparation activities and listen for updates from local officials.



Hurricane Warning
Winds: 74+ mph

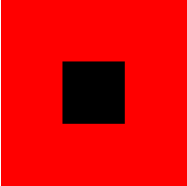
An announcement that hurricane conditions are **expected** in your area

Warnings are issued 36 hours in advance of anticipated onset of tropical storm-force winds.

Take Action: Complete storm preparation activities and evacuate if required by local officials.

Hurricane Watch



 Hurricane Watch is issued 48 hours prior to anticipated onset of tropical storm force winds. Use this time to make sure you are prepared, here are some of our recommendations:

- Clean, sterilize and fill available containers with water for emergency drinking purposes.
- Pack freezer contents tightly to conserve refrigeration in the event of a power outage.
- Photograph and/or video your property and its contents (with date stamps) and save to Cloud-based data storage and/or print and store in waterproof containers.

Place the following in luggage or waterproof containers :

- Reading material, toys and games.
- Toiletries and personal hygiene items.
- Several changes of clothing.
Blankets and pillows for each family member.
- Pet food, carriers, leashes and inoculation records (Ensure pets wear ID tags that include your name, phone number and microchip ID number).

When a Hurricane Watch is Issued



Make plans early. Listen constantly to radio or TV. Monitor storm reports and keep a log of hurricane positions. Remember, evacuation routes sometimes can be closed up to 20 hours before landfall by wind gusting or storm surge flooding. **If considering moving to a shelter, refill needed prescriptions and make arrangements for pets. Pets are allowed ONLY in specifically designated pet-friendly shelters.** If evacuation has not already been recommended, consider leaving the area early enough to avoid long hours on limited evacuation routes.

Check supplies:

Have a transistor radio with fresh batteries. A radio will be the most useful source of information. Have enough batteries to last several days. There may be no electricity. **Flashlights, lamps, and matches.** Store matches in a waterproof container. Have enough lantern fuel for several days and know how to use it safely.

Full tank of gasoline. Never let vehicle gas tanks get below half-full during hurricane season. Fill the tank as soon as a hurricane watch is posted. **Remember:** when there is no electricity, gas pumps won't work.

Canned goods and nonperishable foods. Store packaged foods which can be prepared without cooking and need no refrigeration. There may be no electricity or gas.

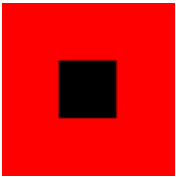
Containers for drinking water. Have clean, airtight containers to store sufficient drinking water for several days. The city supply will probably be interrupted or contaminated.

Materials for emergency repairs. Insurance policies may cover the cost of materials used in temporary repairs, so keep all receipts. These also will be helpful for any income tax deductions.

Hurricane Warning



Hurricane Warning is issued 36 hours prior to anticipated onset of hurricane storm force winds. Use this time to ensure you are prepared for the storm, here are some of our recommendations:



- Get cash.
- Fill up car'(s) gas tank(s).
- Charge cell phone(s).
- Back up computer files.
- Store or secure outdoor furniture.
- Prepare pool and spa.
- Secure boat.
- Turn off breakers or unplug electronics to prevent damage from power surges.
- Bring outdoor planters, balcony/patio/lawn ornaments inside.
- Fill bathtub for bathing and emergency purposes.

When a Hurricane Warning is Issued



Continue listening to radio or TV. Continue to monitor hurricane position, intensity and expected landfall.

If living in a mobile home, check tie-downs and leave immediately for a safer places. Mobile homes are not safe in hurricane force winds.

Prepare for high winds. Brace garage doors. Lower antennas. Be prepared to make repairs.

Anchor outside objects. Garbage cans, awnings, loose garden tools, toys and other loose objects can become deadly missiles. Anchor them securely or move them indoors.

Move boats on trailers close to house. Fill trailered boats with water to weigh them down. Lash securely to trailer and use tie-downs to anchor the trailer to the ground or house.

Check mooring lines of boats in water. Leave the area immediately.

Store valuables and personal papers. Put irreplaceable documents in waterproof containers and store in the highest possible spot. If evacuated, be sure to take them.

Prepare for storm surge, tornadoes and floods. Storm surge, tornadoes and flash floods are the worst killers associated with a hurricane. During a tornado warning, seek shelter inside, below ground level if possible, or in an interior hallway, closet or bathroom on ground level. If outside, move away at right angles from the tornado. If escape is impossible, lie flat in a ditch or low spot. The surge of ocean water plus flash flooding of streams and rivers due to torrential rains combine to make drowning the greatest cause of hurricane deaths.

Check the Disaster Supplies Kit again.

During the Hurricane



- Ensure you entire family remains in your designated safe room.
- Stay clear of external windows and doors.
- Avoid telephone usage except in emergencies.
- Monitor hurricane via radio, TV and internet.
- Remain indoors until official notification that the hurricane has passed; periods of calm are typically followed by intense wind and rain as storm bands as the eye of the hurricane passes over.
- If instructed, turn off utilities; otherwise, turn refrigerator thermostat to coldest setting and keep doors closed to retain cold air.
- If evacuation is necessary, avoid elevators and use stairs.

If Evacuation is Necessary:

- You must evacuation if you reside in an Mandatory Evacuation Zone, a high-rise over 75 feet high or if you don't feel safe in your residence.
- Before evacuating, unplug electrical appliances, and turn off your home's gas, water and electricity.
- Take only bare necessities: cell phone(s), prescription medications, ID (driver's license, passport, etc.), clothing, food, water and cash.
- Use evacuation routes and roads recommended by Emergency Workers despite traffic; other roads may be blocked by downed powerlines, trees, debris and flooding.

Hurricane Shelters



There are 15 general population shelters throughout Palm Beach County. 1 special needs shelter and 1 pet friendly shelter. Shelters should be used as a last resort. You should choose one near your residence. Be sure to know the route, and do not go until you hear from officials that your shelter has opened. Also, be sure to advise family members or friends that you have evacuated and where you will be. Shelters have a limited capacity and will be available on a first-come, first-served basis.

Prepare a Personal Evacuation Plan

- Identify ahead of time where you could go if you are told to evacuate.
- Choose several places – friend’s home in another town, motel or a shelter.
- Keep your telephone numbers of these places handy as well as a road map of your locality.
- You may need to take alternative or unfamiliar routes if major roads are closed or clogged.
- Listen to NOAA Weather Radio or local radio and TV stations for evacuation instructions.

cont.



If You Go to a Shelter, You Should Be Prepared for an Extended Stay.

What to bring:

- Prescription medications and medical supplies
- Bottled water, battery-operated radio and extra batteries, first-aid kit, flashlight
- Bedding, including sleeping bags and pillows
- Infant necessities
- Clothing (five days)
- Car keys and maps
- Documents, including drivers license, Social Security card, proof of residence
- Insurance policies, wills, deeds, birth and marriage certificates, tax records, etc.
- Personal hygiene products
- Light-weight folding chair/ cot
- Personal items (books, toys, etc.)

Evacuation



Evacuation Safety Rules

Before making any last-minute preparations, be absolutely certain there is time. If advised to evacuate, do so immediately. Don't wait until the last minute to leave, hoping to save possessions. Save lives.

Move quickly and calmly. Don't take chances. Getting safely away from the storm area is the first consideration.

Keep a radio turned on and located where it can be heard.

Know where to go before leaving. Local officials will probably establish shelters in public buildings. If the location of public shelters is unknown, listen to the radio for evacuation instructions. If an evacuation route is suggested, use it. Short cuts could have roads or bridges that are blocked, washed away or strewn with downed power lines.

If traveling to a shelter, take blankets or sleeping bags, flashlights, special dietary foods, infant needs and lightweight folding chairs. Register every person arriving at the shelter. Do not take pets, alcoholic beverages or weapons of any kind to shelters. Be prepared to offer assistance to shelter workers if necessary and stress to all family members their obligations to keep the shelter clean and sanitary.

If there is limited time for evacuation preparations, take only family medicines, blankets and a battery-powered radio. If a disaster supplies kit was made, take it.

If there is definitely time before leaving the house:

- Turn off utilities.
- Relocate the most valuable possessions. Possessions that cannot be taken should be moved to higher points in the home. Check to see that everything possible has been done to protect property from damage and loss.

Lock the house when leaving it.

cont.



Evacuation Safety Rules

Do not travel farther than necessary. Roads may become jammed. Listen to the radio while traveling. Watch for washed out bridges or roads, undermined roadways, landslides, fallen rocks, downed power lines and floating hazards.

Hurricanes: Evacuate Early

Select alternate routes before leaving in case the preferred route isn't passable.

Listen to the radio while traveling and heed the latest weather information.

Seek shelter immediately if the storm seems severe.

Try not to travel alone during a storm. Two or three people traveling together can provide mutual aid. Travel with another car if possible.

Make sure someone knows the following information; time of departure, time of expected arrival and expected route.

Always fill the gas tank before leaving, even for short distances.

Drive defensively.

Carry the Disaster Supplies Kit.

cont.



Evacuation Safety Rules

Never attempt to drive during a hurricane or until the all-clear is given after the storm. Flash flooding can occur after a hurricane has passed. Avoid driving on coastal and low-lying roads. Storm surge and hurricane-caused flooding are erratic and may occur with little or no warning.

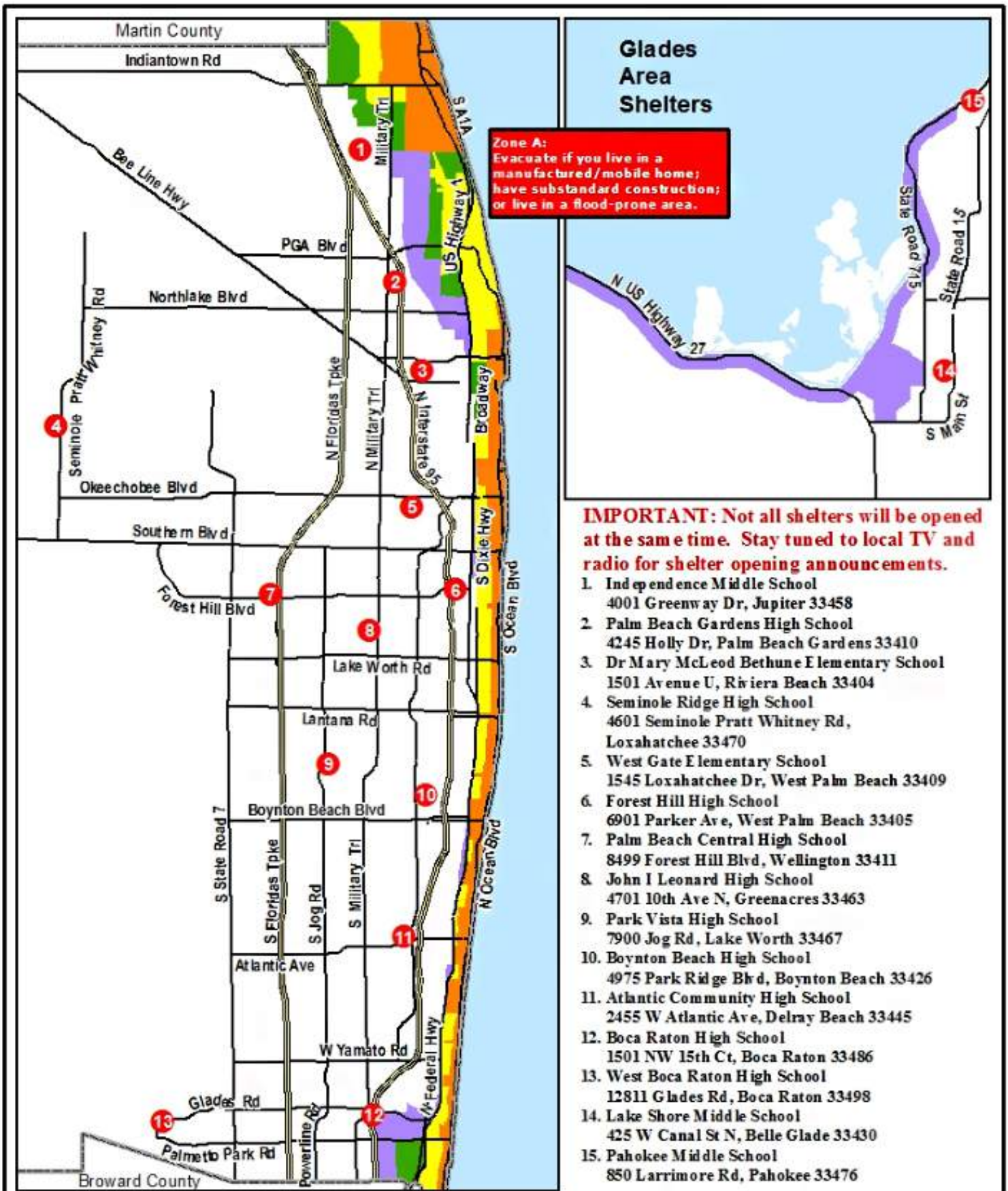
Floods and Tornadoes: Get out of the Car

Floods and tornadoes often accompany hurricanes. Do not try to stay with the car under these conditions.

Never attempt to drive through water on a road. Water can be deeper than it appears and water levels can rise very quickly. Most cars will float dangerously for at least a short while. A car can be buoyed by floodwaters and then swept downstream during a flood. Floodwaters also can erode roadways and a missing section of road, or even a missing bridge, will not be visible with water running over the area. Wade through floodwaters only if the water is not flowing rapidly and only in water no higher than the knees. If a car stalls in floodwater, get out quickly and move to higher ground. The floodwaters may still be rising and the car could be swept away at any moment.

A car is the least safe place to be during a tornado. When a warning is issued, do not try to leave the area by car. If in a car, leave it and find shelter in a building. If a tornado approaches and there are no safe structures nearby, lie flat in a ditch or other ground depression and use arms to cover your head.

2017 Palm Beach County Shelters



Zone A:
Evacuate if you live in a manufactured/mobile home; have substandard construction; or live in a flood-prone area.

IMPORTANT: Not all shelters will be opened at the same time. Stay tuned to local TV and radio for shelter opening announcements.

1. Independence Middle School
4001 Greenway Dr, Jupiter 33458
2. Palm Beach Gardens High School
4245 Holly Dr, Palm Beach Gardens 33410
3. Dr Mary McLeod Bethune Elementary School
1501 Avenue U, Riviera Beach 33404
4. Seminole Ridge High School
4601 Seminole Pratt Whitney Rd, Loxahatchee 33470
5. West Gate Elementary School
1545 Loxahatchee Dr, West Palm Beach 33409
6. Forest Hill High School
6901 Parker Ave, West Palm Beach 33405
7. Palm Beach Central High School
8499 Forest Hill Blvd, Wellington 33411
8. John I Leonard High School
4701 10th Ave N, Greenacres 33463
9. Park Vista High School
7900 Jog Rd, Lake Worth 33467
10. Boynton Beach High School
4975 Park Ridge Blvd, Boynton Beach 33426
11. Atlantic Community High School
2455 W Atlantic Ave, Delray Beach 33445
12. Boca Raton High School
1501 NW 15th Ct, Boca Raton 33486
13. West Boca Raton High School
12811 Glades Rd, Boca Raton 33498
14. Lake Shore Middle School
425 W Canal St N, Belle Glade 33430
15. Pahokee Middle School
850 Larrimore Rd, Pahokee 33476

2017 Risk Shelters With Evacuation Zones

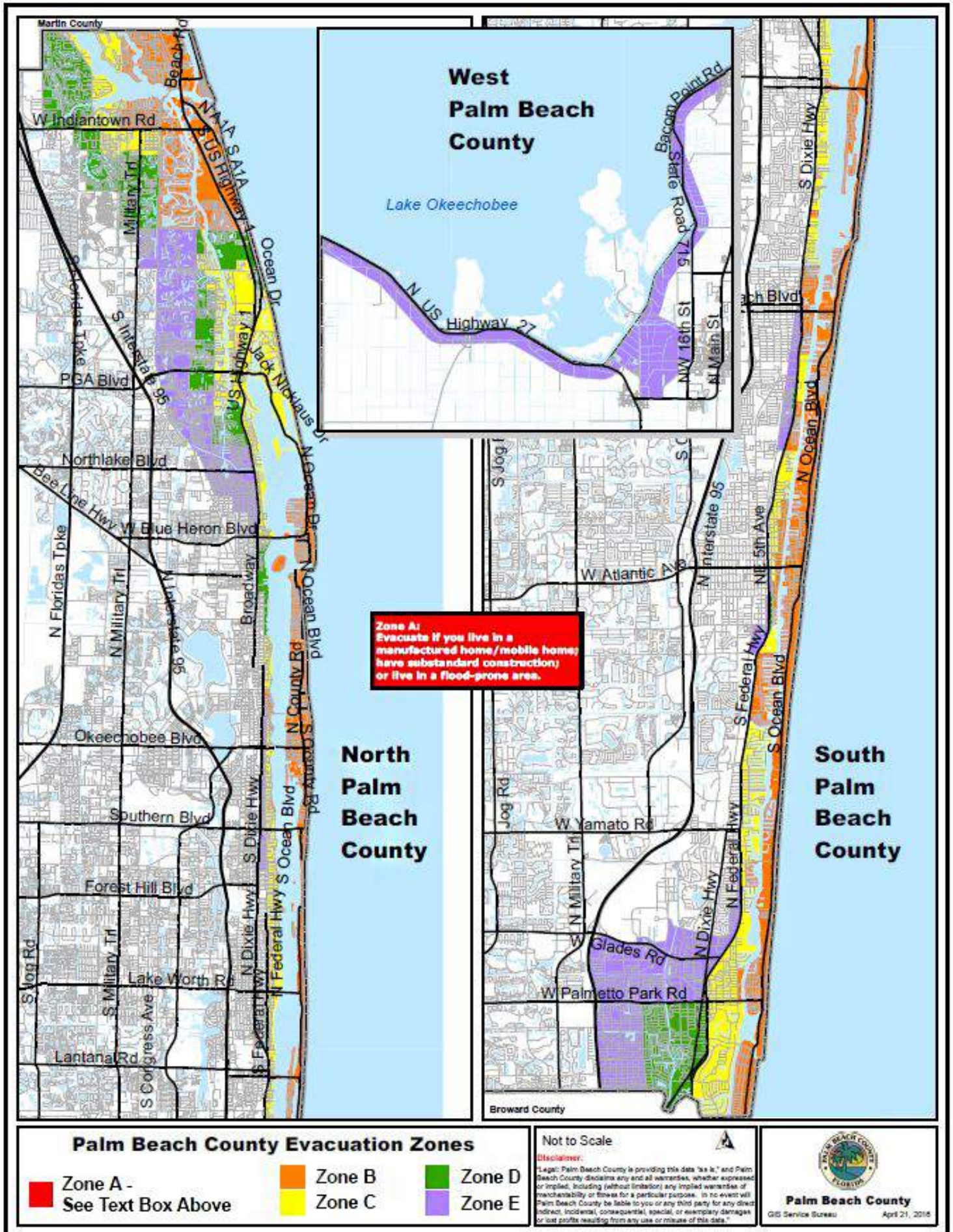
- Shelter
- Zone B
- Zone D
- Zone A - See Text Box Above
- Zone C
- Zone E

Disclaimer:

Palm Beach County is providing this data "as is," and Palm Beach County disclaims any and all warranties, either expressed or implied, including (without limitation) any implied warranties of merchantability or fitness for a particular purpose. In no event will Palm Beach County be liable to you or any third party for any direct, indirect, incidental, consequential, special, or exemplary damages or other profits resulting from any use or misuse of this data.



2017 Palm Beach Evacuation Zones



Palm Beach County Evacuation Zones

Zone A -
See Text Box Above

Zone B
Zone C

Zone D
Zone E

Not to Scale

Disclaimer:

Palm Beach County is providing this data "as is," and Palm Beach County disclaims any and all warranties, whether expressed or implied, including (without limitation) any implied warranties of merchantability or fitness for a particular purpose. In no event will Palm Beach County be liable to you or any third party for any direct, indirect, incidental, consequential, special, or exemplary damages or lost profits resulting from any use or misuse of this data.



Palm Beach County

GIS Service Bureau

April 21, 2016

After the Hurricane:

Just because the storm has passed does not mean there is no more danger.

If evacuated, delay returning until it is recommended or authorized by local authorities.

Beware of outdoor hazards. Watch out for loose or dangling power lines and report them immediately to proper authorities. Many lives are lost through electrocution.

Walk or drive cautiously. Debris-filled streets are dangerous. Snakes and poisonous insects will be a hazard. Washouts may weaken road and bridge structures which could collapse under vehicle weight.

Guard against spoiled food. Food may spoil if refrigerator power is off more than a few hours. Freezers will keep food several days if doors are not opened after power failure but do not refreeze food once it begins to thaw.

Do not use water until safe. Use emergency supplies or boil water before drinking until official word is given that the water is safe. Report broken sewer or water mains to the proper authorities.

Take extra precautions to prevent fire. Lowered water pressure in city mains and the interruption of other services may make fire fighting extremely difficult after a hurricane.

cont.



Recovery

Insurance - insurance representatives will be on the scene immediately following a major disaster to speed up the handling of claims. Notify the insurance agent or broker of any losses and leave word where to be contacted.

Take steps to protect property. Make temporary repairs to protect property from further damage or looting. Use only reputable contractors (sometimes in the chaotic days following a disaster, unscrupulous operators prey on the unsuspecting). If possible, check contractors through the Better Business Bureau. Keep receipts for materials purchased.

Be patient. Hardship cases will be settled first by insurance representatives. Don't assume the settlement will be the same as a neighbor's. Policy forms differ and storm damage is often erratic. In a major catastrophe, the insurance industry will have emergency offices and extra manpower to expedite claim settlements and to speed recovery. Everyone cannot be first.

It takes team effort. Responsibility for the clean-up falls to numerous local, state and federal agencies. A local Emergency Management coordinator (the mayor, county judge, or a designated representative) will be on hand to help residents in this effort.

General Post-Storm Safety

- Keep listening to NOAA Weather Radio or local radio and TV stations for instructions.
- If you evacuate, return home only when local officials tell you it is safe to do so.
- Use flashlights in the dark; do not use candles.
- Roads may be closed for your protection. If you come upon a barricade or a flooded road, turn around and go another way.
- Avoid weakened bridges and washed out roads. Do not drive into flooded areas.
- Stay away from flood waters and stay on firm ground. Moving water only six inches deep can sweep you off your feet.
- Standing water may be electrically charged from underground or downed power lines.
- Check gas, water and electrical appliances for damage.
- Do not drink or prepare food with tap water until you are certain it is not contaminated.
- Use the telephone to report life-threatening emergencies only.
- Be especially cautious if using a chainsaw to cut fallen trees.
- Avoid loose or dangling power lines and report them to the power company, police or fire department.
- Enter your home or any building with caution.
- Wear sturdy shoes and do not enter if there is water around the building.
- If you feel a building is not safe, do not enter and call your contractor or engineer.
- Look for fire hazards such as flooded electrical circuits or submerged furnaces and appliances.
- Check for gas leaks. If you smell gas or hear a hissing noise, open a window and leave quickly. Turn off the gas at the outside main valve, and call the gas company from a neighbor's home.
- Look for electrical system damage. If you see sparks or frayed wires, turn off the electricity at the main fuse box or circuit breaker.
- Check for sewage and water line damage . If you think sewage lines are damaged, don't use toilets, and call a plumber. If water pipes are damaged, don't use tap water and call the water company.
- Watch out for animals, especially poisonous snakes that may have entered the building with flood waters.
- Open windows and doors to ventilate and dry your home.

Road Safety



Palm Beach County Emergency Management officials urge residents to stay at home and not venture out in the hours immediately following a hurricane. More injuries and fatalities occur after a major storm event than as a result of the weather itself.

- Driving is extremely hazardous with storm debris on the roads, traffic signals that aren't working, signs that are down, flooding and downed power lines. Do not drive unless absolutely necessary. Drive slowly and approach all intersections with extreme caution. Treat intersections with missing/ non-working traffic signals or missing stop signs as a four-way stop.
- Never drive through flooded roadways. The depth of the water is not always obvious. Also, the road bed may not be intact under flood waters.
- If there is danger of flooding and your vehicle stalls, leave it immediately and seek higher ground. Rapidly rising water may engulf the vehicle and its occupants, sweeping them away.
- Do not visit disaster areas. Your presence may slow down emergency operations.
- Obey curfew. They are mandatory and will be re-evaluated daily. Anyone out during curfew could be subject to arrest.
- When a traffic signal regains power, it may flash red or yellow. Drivers should stop at the flashing red light and proceed cautiously through a flashing yellow light.
- If the power is out and the signal lights are dark, the intersection should be treated as a four-way stop.
- **The following four-way stop procedure should be used at intersections where traffic signals are not functioning or stop signs are missing:**
 1. **All vehicles must stop**
 2. **The driver of the first vehicle to stop at the intersection shall be the first to proceed.**
 3. **If two or more drivers reach the intersection at the same time, the driver on the left shall yield to the vehicle on the right.**

Who Helps After the Storm?



If you need immediate help:

With Animals

Palm Beach County Animal Care and Control
7100 Belvedere Road
West Palm Beach, FL 33411
561-233-1200

Clothing

The Salvation Army
2100 Palm Beach Lakes Blvd.
West Palm Beach, FL 33409
Referrals are made to other agencies for
clothing or vouchers

Emotional Support

Palm Beach Treasure Coast
Dial 211

Food, Water, Ice Pick-Up

Palm Beach County Emergency Management
Check local news for distributions sites

Utility Interruptions

Contact your local utility.

Food - Mass Feeding

The Salvation Army
2100 Palm Beach Lakes Blvd.
West Palm Beach, FL 33409
561-686-3530

Food - Shelter Feeding

American Red Cross
825 Fern Street
West Palm Beach, FL 33401
561-833-7711

Medical

In an emergency, call 911. If there is no
connection, contact local police or fire.

Shelter

American Red Cross
825 Fern Street
West Palm Beach, FL 33401
561-833-7711

If You Can Assist



With Animals

Palm Beach County Animal Care and Control

7100 Belvedere Road
West Palm Beach, FL 33411
561-233-1200

By Donating Clothing

The Salvation Army

2100 Palm Beach Lakes Blvd.
West Palm Beach, FL 33409

Referrals are made to other agencies for clothing or vouchers

To Provide Emotional Support

United Way of Palm Beach County

2600 Quantum, Blvd.
Boynton Beach, FL 33426-8627
561-375-6600

To Work at a Shelter

Mass care shelters in Palm Beach County are opened and operated by the **American Red Cross**.

To Volunteer

American Red Cross trained disaster volunteers report to:

American Red Cross

825 Fern Street
West Palm Beach, FL 33401
561-833-7711

United Way of Palm Beach County volunteers report to:

United Way of Palm Beach County

2600 Quantum, Blvd.
Boynton Beach, FL 33426-8627
561-375-6600

***Financial Assistance:** Disaster services stretch the limited resources of organizations. If you want to directly support disaster response and relief organizations, contact the United Way or American Red Cross at the numbers above, or refer to local media for information on where to direct contributions.

Gas Stations and Supermarkets with Generators



Due to a law passed in 2006 which requires gas stations to have transfer switches, there are now many gas stations with the ability to run off generators. Supermarkets have also been proactive in adding generators to their locations and Publix alone counts over 70 stores in Palm Beach County with back-up generators. Included, you'll find a list of gas stations and supermarkets with generators throughout the Palm Beach County area. We recommend paying close attention to the news and radio for information on gas stations and stores re-opening after the storm. Remember to also be cautious when leaving your home after the storm as roads could be obstructed. Follow our Road Safety tips when driving after a Tropical Storm or Hurricane.

Gas Stations with Transfer Switches

Murphy USA

103 N. Congress Ave, Lake Park

Costco #628

11001 Southern Blvd, Royal Palm Beach

Costco Wholesale #345

17800 Congress Ave, Boca Raton

Publix Pix #851

15961 Orange Blvd, Loxahatchee

Cumberland Farms #0940

23077 State Road 7, Boca Raton

South Congress Airport Shell

242 S Congress Ave, West Palm Beach

Raceway

288 Haverhill Rd, West Palm Beach

PGA Shell East

4150 Pga Blvd, Palm Beach Gardens

Cumberland Farms #9753

4771 S Military Trl., Lake Worth

Mobil/ Grove Gas Station

5070 Seminole Pratt Whitney Rd, Loxahatchee

4 Points Market /BP

645 W Boynton Beach Blvd, Boynton Beach

Lake Worth Turnpike Shell

8195 Lake Worth Rd, Lake Worth

Next Store

8081 Congress Ave, Boca Raton

K & V Mobil, Inc

1990 N Dixie Hwy, Boca Raton

Sun Gas Marketing & Petroleum

5440 W Glades Road, Boca Raton

Camino Real Mobil

1 E Camino Real, Boca Raton

Glades Road Mobil

690 W Glades Road, Boca Raton

Shell First Coast Energy,

1701 21302 St Andrews Blvd, Boca Raton

Yamato Congress BP

801 W Yamato Rd, Boca Raton

Biscayne Petroleum Store #12923

1459 W Yamato Rd, Boca Raton

Bocamart, Inc.

198 W Yamato Rd, Boca Raton

Coastal Prip Mart 199

199 Nw 20Th St, Boca Raton

Gas Stations with Transfer Switches *(cont.)*

Marathon Gas 5490

Military Tr., Jupiter

Mobil

3950 Indiantown Rd, Jupiter

Jupiter West Mobil

6661 W. Indiantown Rd, Jupiter

Jupiter West Shell

6751 W. Indiantown Rd, Jupiter

Chevron

9141 Southern Blvd, Royal Palm Beach

Delray Chevron

1909 W Atlantic Ave, Delray Beach

Marathon Gas

890 US Highway 27 N, South Bay

Mobil On The Run

6221 PGA Blvd, Palm Beach Gardens

Mobil On The Run # 18205

850 Gateway Blvd, Boynton Beach

Marathon Gas

810 N Congress Ave, Riviera Beach

Racetrac

2995 45Th St, West Palm Beach

Racetrac

4156 Blue Heron Blvd W, Riviera Beach

Sunoco Gas

130 N Jog Rd, West Palm Beach

Southern Belle Valero

255 US Highway 27 N, South Bay

West Palm/Lake Worth Service Plaza Turnpike

Plaza, #2 Mm 94, Lake Worth

Marathon Gas

1840 Palm Beach Lakes Blvd, West Palm Beach

Sunoco #7716

3985 Lake Worth Rd, Lake Worth

Publix Stores with Generators



Countyline Plaza

500 North U.S. Highway 1, Tequesta, 33469

Chasewood Plaza

6330 W Indiantown Road, Jupiter, 33458

Abacoa Plaza

5500 Military Trail, Jupiter, 33458

Bluff's Square Shopping Center

4060 South U.S. Highway 1, Jupiter, 33477

Jupiter Square Shopping Center

95 U.S. Highway 1, Jupiter, 33477

Jupiter Farms Village

10142 Indiantown Road, Jupiter, 33478

Sea Plum Town Center

123 Honeybell Way, Jupiter, 33458

The Shoppes of Jonathan's Landing

17400 Alternate A1A, Jupiter, 33477

Mirasol Walk

6251 PGA Blvd., Palm Beach Gardens, 33418

Oakbrook Square Shopping Center

11566 North U.S. Highway 1, Palm Beach Gardens, 33408

Garden Square

10913 North Military Trail, Palm Beach Gardens, 33418

Promenade Shopping Plaza

9900 Alternate A1A, Palm Beach Gardens, 33410

Gardens Town Square

4200 Northlake Boulevard, Palm Beach Gardens, 33410

Legacy Place Shopping Center

11231 Legacy Avenue, Palm Beach Gardens, 33410

Frenchman's Crossing

Hood Road & Alternate A1A, Palm Beach Gardens, 33410

Northlake Promenade Shoppes

374 Northlake Boulevard, Lake Park, 33408

Publix Stores with Generators *(con.t)*



Publix at Riviera Beach

Blue Heron Boulevard and Lake Shore Drive, Riviera Beach, 33404

Publix on Palm Beach

265 Sunset Avenue, Palm Beach, 33480

Southdale Shopping Center

828 Southern Boulevard, West Palm Beach, 33405

Village Commons Shopping Center

831 Village Boulevard, West Palm Beach, 33409

Crosstown Plaza

2895 N. Military Trail, West Palm Beach, 33409

Shoppes at Ibis

10130 Northlake Boulevard, West Palm Beach, 33412

Shoppes at Andros Isle

8989 Okeechobee Boulevard, West Palm Beach, 33411

Paradise Place

4075 North Haverhill Road, West Palm Beach, 33417

Palm Beach Plaza

6820 Okeechobee Boulevard, West Palm Beach, 33411

Polo Grounds Mall

890 South Military Trail, West Palm Beach, 33415

Crestwood Square

11977 Southern Boulevard, Royal Palm Beach, 33411

The Crossroads at Royal Palm Beach

1180 Royal Palm Beach Boulevard, Royal Palm Beach, 33411

Publix at the Acreage

7050 Seminole Pratt Whitney Road, Loxahatchee, 33470

Courtyard Shops at Wellington

13880 Wellington Trace, Wellington, 33414

Publix Stores with Generators *(con.t)*



The Groves at Royal Palm

127 South State Road 7, Wellington,
33414

Town Square at Wellington

11950 West Forest Hill
Boulevard, Wellington, 33414

Riverbridge Centre

6790 Forest Hill Boulevard, Greenacres,
33413

Publix Atlantis

4849 South Military Trail, Greenacres,
33463

Greenwood Shopping Center

1700 South Congress Avenue, Palm
Springs, 33461

Nassau Square

7745 Lake Worth Road, Lake Worth,
33463

Town Commons

8899 Hypoluxo Road, Lake Worth, 33467

Woods Walk Plaza

9855 Lake Worth Road, Lake Worth, 33467

Lantana Plaza Shopping Center

5970 South Jog Road, Lake Worth, 33467

Publix at Lake Worth

Dixie Highway and North 2nd Avenue, Lake
Worth, 33460

Lantana Shopping Center

1589 W Lantana Road, Lantana, 33462

Publix at Lake Worth

Dixie Highway and North 2nd Avenue, Lake
Worth, 33460

Lantana Shopping Center

1589 W Lantana Road, Lantana, 33462

Fountains of Boynton

6627 West Boynton Beach
Boulevard, Boynton Beach, 33437

Meadows Square

4753 North Congress Avenue, Boynton
Beach, FL 33426

Publix Stores with Generators *(con.t)*



Boynton Plaza

111 North Congress Avenue, Boynton Beach, 33436

Sunshine Square Shopping Center

501 SE 18th Avenue, Boynton Beach, 33435

Aberdeen Square

4966 Le Chalet Boulevard, Boynton Beach, 33436

Aberdeen

8340 Jog Road, Boynton Beach, 33437

Canyon Town Center

Boynton Beach Boulevard and Lyons Road, Boynton Beach, 33437

Valencia Square

Woolbright Road and Jog Road, Boynton Beach, 33437

Whitworth Farms

12425 Hagen Ranch Road, Boynton Beach, 33437

The Plaza at Delray

1538 South Federal Highway, Delray Beach, 33444

Delray Square Shopping Center

4771 West Atlantic Avenue, Delray Beach, 33445

Shops of San Marco

13860 South Jog Road, Delray Beach, 33446

Village of Oriole Plaza

7375 West Atlantic Avenue, Delray Beach, 33446

Addison Centre

16130 South Jog Road, Delray Beach, 33446

North Delray Commons

555 NE 5th Avenue, Delray Beach, 33483

Westwinds of Boca

9846 Glades Road, Boca Raton, 33434

Mercado Real

1001 South Federal Highway, Boca Raton, 33432

Hardware Stores with Generators



Home Depot

1694 West Indiantown Road, Jupiter, 33458

3860 Northlake Boulevard, Lake Park, 33403

1550 Palm Beach Lakes Boulevard, West Palm Beach, 33401

6800 Okeechobee Boulevard, West Palm Beach, 33411

220 South State Road 7, West Palm Beach, FL 33414

4241 Lake Worth Road, Lake Worth, 33461

5750 Jog Road, Lake Worth, 33463

1500 SW 8th Street, Boynton Beach, 33426

1400 Waterford Place, Delray Beach, 33444

15050 Jog Road, Delray Beach, 33445

9820 Glades Road, Boca Raton, 33434

Lowe's

401 North Congress Avenue, Lake Park, 33403

4701 Okeechobee Boulevard, West Palm Beach, 33417

103 South State Road 7, Royal Palm Beach, 33411

1500 Corporate Drive, Boynton Beach, 33426

21870 State Road 7, Boca Raton, FL 33428