



# EURO VISTA MULTI SLIDE™

IMPACT RATED MULTI SLIDE DOOR



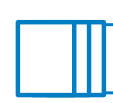
Approved for use in Miami-Dade HVHZ Zones  
Florida Building Code Approved  
Product Approval FL 27423

[www.euro-wall.com](http://www.euro-wall.com)  
888.989.EURO (3876)

## euro-wall®



FOLDING



SLIDING



STACKING



PIVOT

## Unlike any other impact rated multi slide door on the market.

The Euro Vista Multi Slide™ is unlike any other impact rated multi slide door. The panel interlock, at less than 1", is the slimmest sight line profile available providing the largest views and the maximum panel to glass ratios. The panels can span up to 70 sq ft with heights up to 12' and widths up to 8' all while maintaining an impact rating for inclement weather areas. These massive panels glide open and closed effortlessly thanks to the patented EZ Glide™ roller system. The sill can be embedded flush with the finish floor and can meet water ratings without the need of a sill riser. The Euro Vista Multi Slide™ is a truly unique sliding door system and provides consumer benefits that cannot be found anywhere else.

*Less than 1" Interlock  
Sight Line Profile*

*Impact Rated*

*Panels up to 70 sq ft*

*Panel Heights up to 12'*

*Panel Widths up to 8'*

*Flush Embedded  
Water Rated Sill*

# SYSTEM THRESHOLDS

## Maximum / Minimum Specifications

Max Panel Weight:	800 lbs / panel
Min Panel Width:	24"
Max Panel Width:	96"
Min Panel Height:	24"
Max Panel Height:	144"
Panel Thickness:	1 3/4"
Max # of Panels:	8

**NOTE:** When using maximum panel widths & heights, panels may exceed maximum panel weight of 800 lbs. Calculated weight check should be done. For installations in Florida, please see the Florida Product Approval for usage and limitations.

## SYSTEM HIGHLIGHTS

### Thinnest Profile on the Market

Interlocking panels have a sight line profile width of less than 1" providing the largest uninterrupted view available from any impact rated multi slide on the market

### Water Rated Flush Sill - No Sill Riser

Flush track with finished floor - enjoy the security of a HVHZ water rating without 2", 3" or 4" risers

### Up to 8 Panels with Pocket Option

Up to 8 panels in any direction - pockets approved with all configurations

### Extrusions

Extruded aluminum 6063-T5 with door panel corner keys provide industry leading strength and security

### Handle Hardware

Stainless steel components with corrosion resistant material - salt spray tested 500 hours

### Value Engineered

Value engineered to offer the highest quality with reasonable pricing

### Largest Impact Rated Panel Sizes

Enjoy large uninterrupted views with up to 70 sq ft Florida Product Approved panels (up to 12' heights and 8' widths)

### Aesthetics

Wood cladding option available

### FL 27423

Tested for use in Miami-Dade and Florida HVHZ Zones

### Long Lasting Finish

Standard finish coating is AAMA 2605, the highest quality finish available

### Thermal Requirements

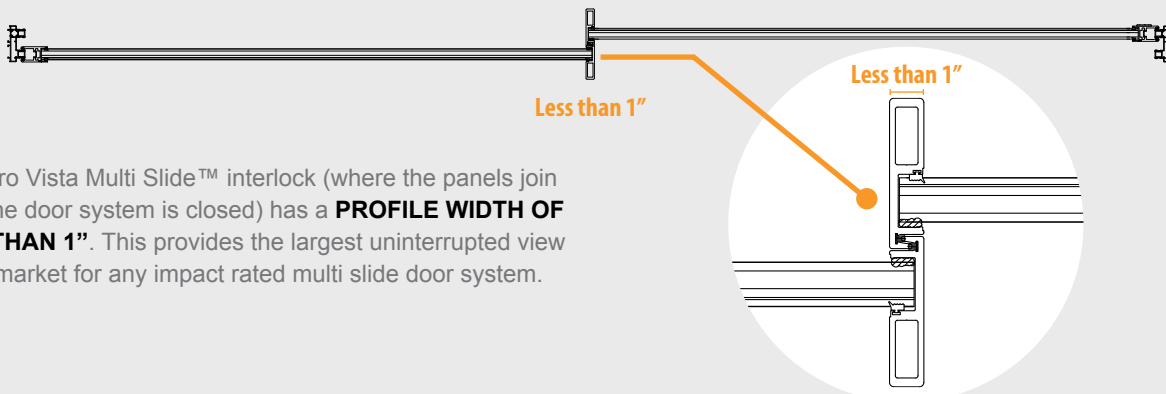
Tested for thermal requirements for both residential and commercial usage

### Easy Operation

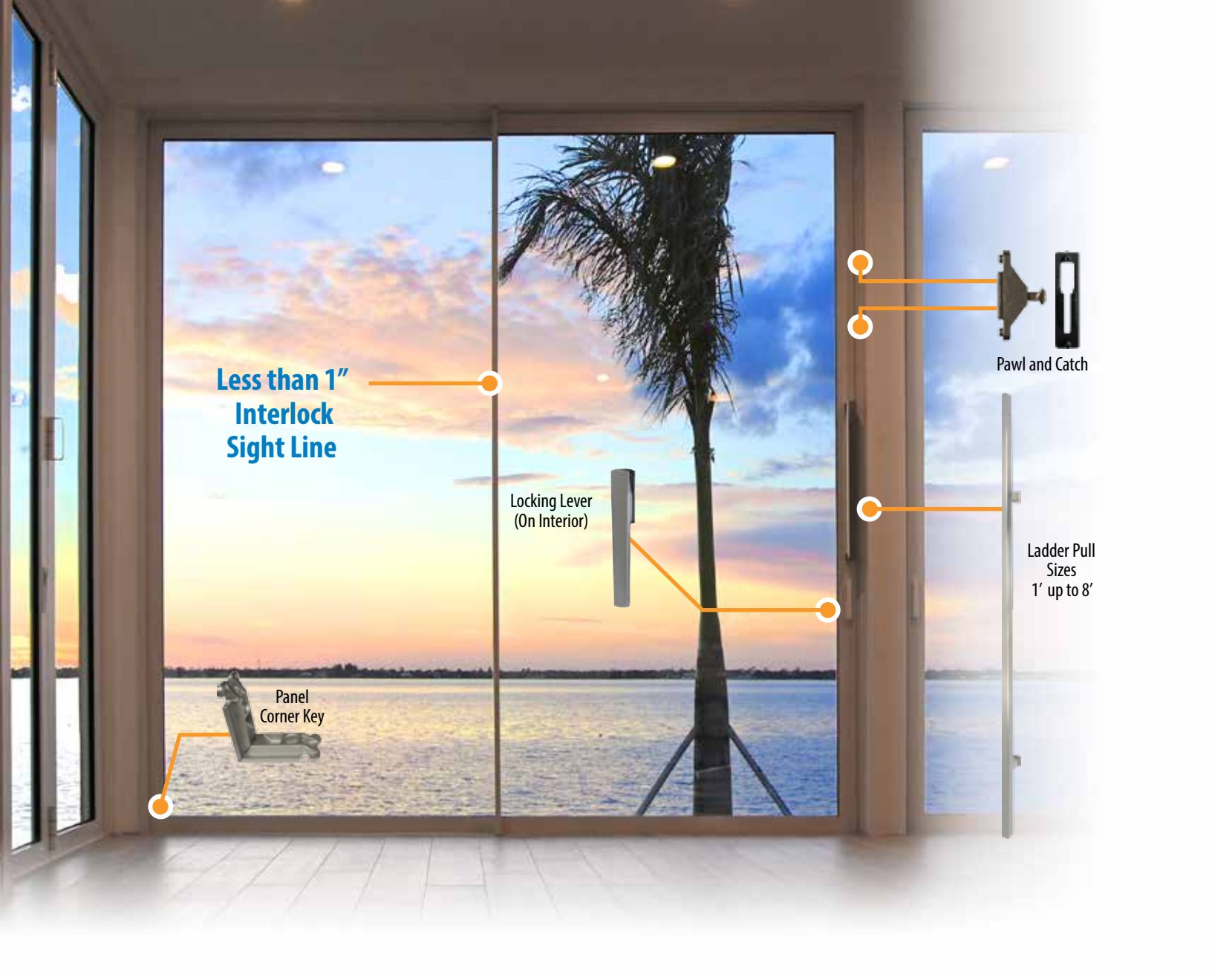
The EZ Glide™ Roller System and anti-slam hardware makes the Euro Vista Multi Slide™ safe and effortless to operate

## LESS THAN 1" SIGHT LINE PROFILE

### Top Down Cross Section View



The Euro Vista Multi Slide™ interlock (where the panels join when the door system is closed) has a **PROFILE WIDTH OF LESS THAN 1"**. This provides the largest uninterrupted view on the market for any impact rated multi slide door system.

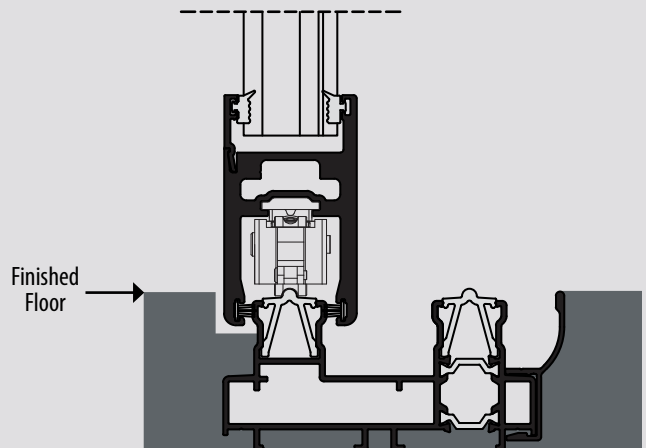


## EMBEDDED TRACK DETAILS

The Euro Vista Multi Slide™ sill/track can be **fully embedded** or embedded with a **low profile** configuration. The hidden track option allows optimal threshold clearance and creates a clean seamless interior / exterior sight line.

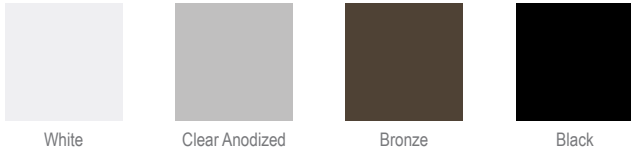
*For weather challenged climates, the flush and low profile hidden track systems can be manufactured to meet water rating specifications without a sill riser. Additionally, Euro-Wall EXCLUSIVELY manufactures a water rated hidden flush sill.*

### EMBEDDED SILL & PANEL CROSS SECTION DETAIL



# PANEL FINISH OPTIONS

## STANDARD FRAME & DOOR PANEL FINISHES



White

Clear Anodized

Bronze

Black

## STANDARD FRAME & DOOR PANEL FINISHES

- Anodized, powder coat or Kynar® finishes available
- Custom powder coat or Kynar® finishes available
- Manufacturer color match options
- Custom wood grain finishes available

## INTERIOR WOOD CLAD FINISH OPTION

- Douglas fir
- Mahogany / sapele
- White oak
- Additional wood species available



# HARDWARE / HANDLE FINISH OPTIONS

## LADDER PULL

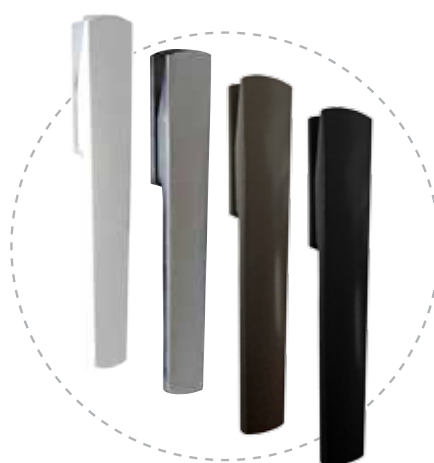


LADDER PULL SIZES UP TO 8' TALL

### Available Finishes

- Polished Stainless Steel**
  - Brushed Satin**
  - Black**
- Custom Colors Available*

## LOCKING LEVER



### Available Finishes

- White**
  - Brushed Satin**
  - Bronze**
  - Black**
- Custom Colors Available*

## SILL / TRACK



### Available Finishes

- Clear Anodized**
  - White**
  - Bronze**
  - Black**
- Custom Colors Available*

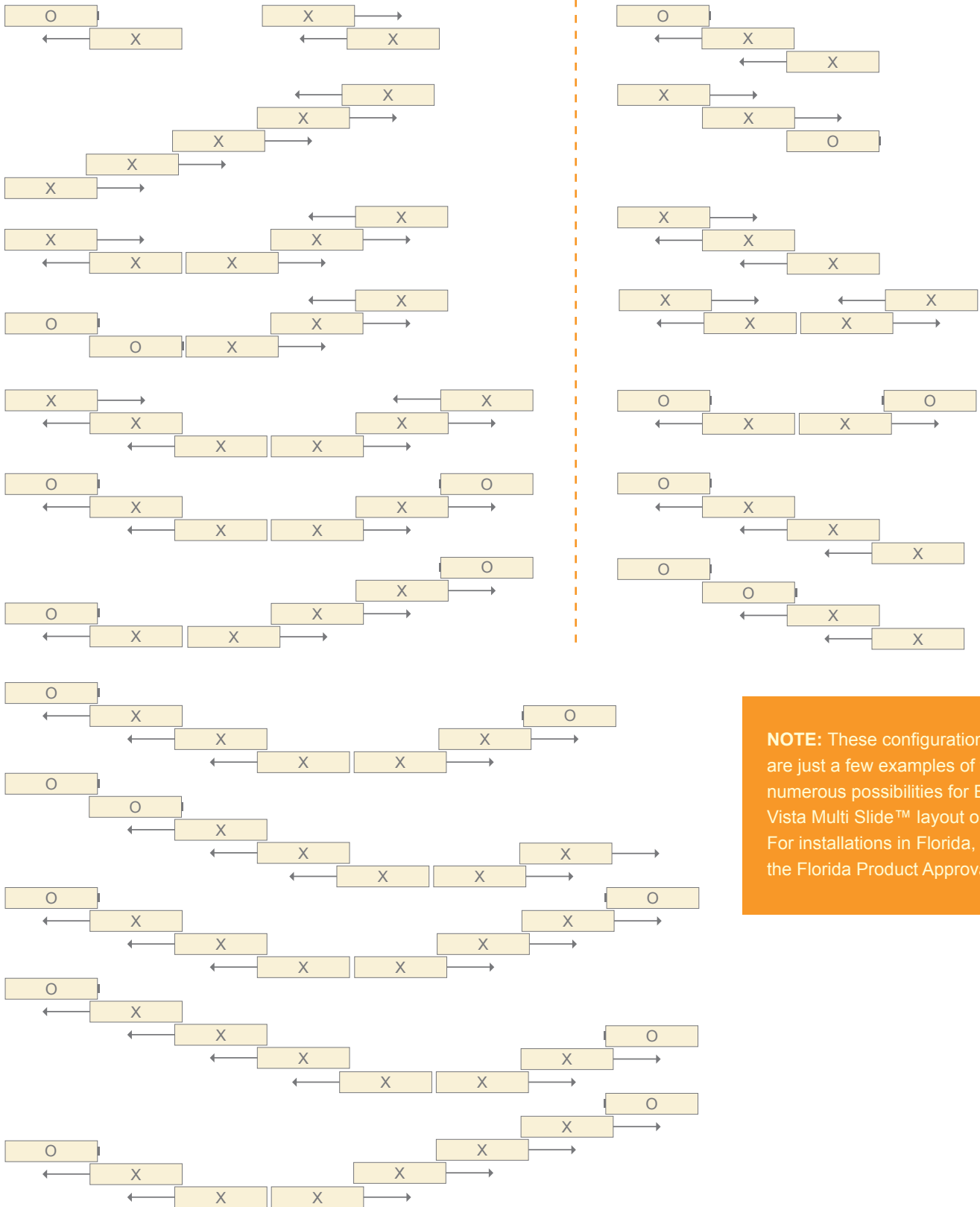
## GLAZING OPTIONS

- Insulated Glass
- Impact Insulated Glass
- Monolithic Impact Glass

# SUPERIOR BY DESIGN

# CONFIGURATION SAMPLES

O = FIXED PANEL X = ACTIVE PANEL



**NOTE:** These configurations are just a few examples of the numerous possibilities for Euro Vista Multi Slide™ layout options. For installations in Florida, see the Florida Product Approval.

# TEST PERFORMANCES

- Approved for use in Miami-Dade HVHZ Zone
- Florida Building Code Approved Product Approval FL 27423
- AAMA 440 - PASS
- ASTM E1300 - PASS
- NAFS - 08 - PASS
- WDMA/CSA101 - PASS
- Up to DP70
- Tested for use in Florida
- Impact 1886 & 1996
- TAS 201, 202, 203 (Miami Dade)

## DESIGN PRESSURE CHART

Panel Width (Inches)

	30	32	36	40	44	48	52	56	60	66	72	78	84	90	96
72	70	70	70	70	70	70	70	70	70	70	70	70	70	70	70
78	70	70	70	70	70	70	70	70	70	70	70	70	70	70	48.1
84	70	70	70	70	70	70	70	70	70	70	70	70	70	51.3	48.1
90	70	70	70	70	70	70	70	70	70	70	70	70	55	51.3	48.1
96	70	70	70	70	70	70	70	70	70	70	70	55	55	51.3	48.1
102	70	70	70	70	70	70	70	70	70	70	55	55	55	51.3	48.1
108	70	70	70	70	70	70	70	70	70	70	55	55	55	51.3	
114	70	70	70	70	70	70	70	70	70	55	55	55	55		
120	70	70	70	70	70	70	70	70	70	55	55	55	55		
126	70	70	70	70	70	70	70	64.2	55	55	51.6	48.8			
132	70	70	70	70	68.6	63.4	61.2	55	55	55	44.3				
138	70	70	70	65.3	59.8	55.2	53.3	54.3	51.2	47.4	38.4				
144	70	70	63.3	57.3	52.4	48.4	45.7	41.3	38.9	35.9					

 Impact Rated HVHZ

 Impact Rated Non-HVHZ



## EURO-WALL 10 YEAR WARRANTY

Euro-Wall warrants the products to be free from manufacturing defects for a period of 10 years from the date of purchase.

888.989.EURO (3876)

[www.euro-wall.com](http://www.euro-wall.com)

**euro-wall**<sup>®</sup>

FOLDING | SLIDING | STACKING

### MANUFACTURING

2200 Murphy Court  
North Port, Florida 34289  
888.989.3876 • 941.979.5316

### SHOWROOM

1211 Stirling Road, Unit 102,  
Dania Beach, Florida 33004  
954.610.2572

Proud Member of the American Architectural Manufacturers Association.

