

## ES-5000

The ES-5000 is a 2 1/8" impact rated, casement window featuring a roto-type handle for an effortless operation. It is available in multiple glazing options providing flexibility in design.

### System Description

- Large missile impact
- 2 1/8" Frame depth
- Configurations: X, XX
- Designed for laminated and insulating glass options
- Water infiltration: 13.5 psf
- Design load: +90/-90 psf
- Maximum size: 37" x 74" X; 74" x 74" XX
- U-value: 0.64 (with 5/32 SB70XL – Air Spacer – 1/8 Clear – 0,90 PVB – 5/32 Clear) Low-E (#6)

### Features

- Single arm operator and multi-point lock
- Heavy duty stainless steel four bar hinge
- Flange frame for masonry and wood construction or flush frame for concrete openings
- Screens available in aluminum frame and fiberglass mesh
- Surface applied OG or flat muntins
- Folding crank handle



# COLORS AND FINISHES

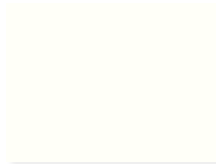
## Standard Colors



Sunstorm Arcadia Silver  
UC70123F



Bermuda Bronze  
UC70123F



Bone White  
UC43350



Clear Anodized

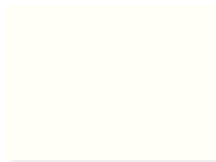
## Hardware Finishes



Bronze



Silver



White

\*Custom Colors Available

---

### Service

Our engineers and designers provide customers with ongoing assistance and technical support to ensure the best solution for every project. We offer professional guidance to help customers pinpoint and balance their priorities. With this expert assistance, customers can plan and complete projects to achieve maximum benefits.

### Engineering and Design

We offer the right solutions for the most complex projects and respond efficiently to the demands of architects and general contractors. We can deliver reliable, efficient and affordable products, due to a combination of advanced software technology and a leading team of expert engineers and designers, who specialize in aluminum, glass and window systems.

The Elite line provides customers a perfect combination of reliability, design and performance across a wide range of product types. Whether you are looking for noise reduction, temperature control, or protection from extreme weather, our line of products can provide the perfect performance solution, without sacrificing aesthetics.

# ACCESSORIES

## Design Elements

Every Elite window and door benefits from a combination of premium materials, cutting-edge production technology and the talent of an experienced team. All of these result in precise stylish designs that will endure over time.

**EL-400 Roller**



**EL-100 & EL-200 Sweep Locks**



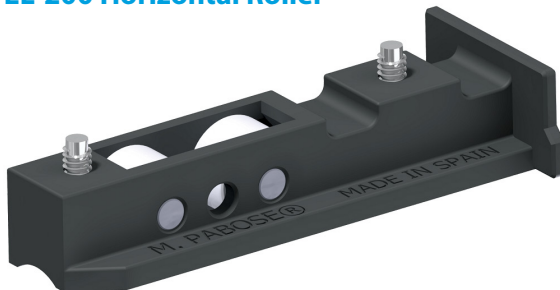
**EL-100 & EL-200 Spring Latches**



**EL-400 Involute Handle**



**EL-200 Horizontal Roller**



**EL-300 Handle**

